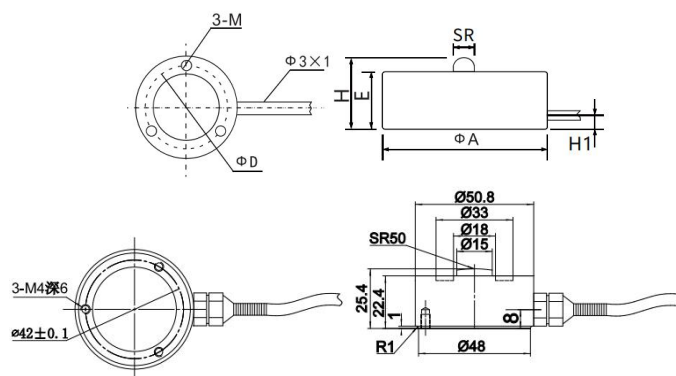




外形尺寸/ Dimensions



量程 0-10T

特点和用途 / Features & Applications

- 体积小,易安装
- 适用于各种安装空间有限的设备上的力值检测与控制
- 固定频率高
- ❖ Small in volume , easy to install
- ❖ Suitable for force value detection and control on various equipment with limited installation space
- ❖ High fixed frequency

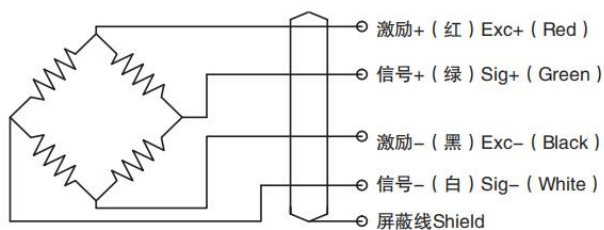
选型表 / Features & Applications

量程 Cap	ØA	ØC	ØD	H	M	H1	SR
3~200kg	20	2.5	15.5	12	M3	4	2
300~500kg	26	5	18.5	15	M4	5	6
1~2t	26	5	18.5	15	M4	5.5	20
3~5t	37.7	10.8	31	15.5	M2.5	4	50

技术参数 / Technical Parameters

量 程 Capacity	0~10T	温度补偿范围 Compensated temp range	- 10° C ~ 60 ° C
额定输出 Rated output	1.0~2.0 mV / V	工作温度范围 temp range	- 20 ° C ~ 80 ° C
滞 后 Hysteresis	0.3 % R.O.	推荐激励电压 Recommended excitation	5~10V DC
重 复 性 Repeatability	0.3% R.O.	安全载荷 Safe overload	120% R.C.
非 线 性 Non-linearity	0.3% R.O.	最大负载 Ultimate overload	150% R.C.
零点输出 Zero balance	± 1 % R.O.	响应频率 Response frequency	10KHZ
蠕变 Creep	0.1 % R.O.	材质 Material	不锈钢
零点温漂 Temp.effect on zero	0.3 % R.O. / 10° C	电缆线规格 Cable Specifications	Ø3*2m Ø5*2m(10t)
灵敏度温漂 Temp.effect on output	0.3 % R.O. / ° 10C	电缆极限拉力 Cable Ultimate pull	10kg
输入阻抗 Input impedance	700/1000 Ω	防护等级 Protection class	IP60
输出阻抗 Out impedance	700/1000 Ω	TEDS	可选
绝缘阻抗 Insulation	≥5000MΩ /100V DC		

接线图 / Schematic Wiring Diagram



注:屏蔽线不与弹性体相连。

Note:Cable shield is not connected to element.

受力方式/ Force Direction

