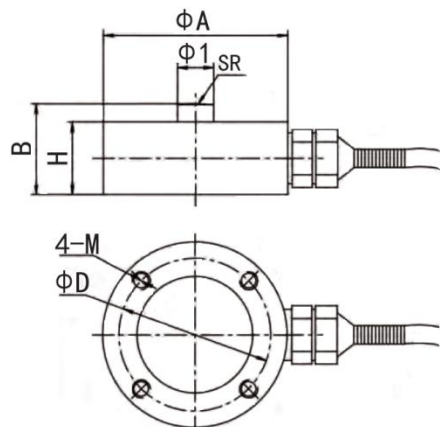


外形尺寸/ Dimensions



特点和用途 / Features & Applications

- 综合精度高，长期稳定性好，高频响应，抗偏载好
- 主要应用于压装机械，及动态冲压设备的瞬时力测量，料斗秤和罐体秤的动态重量控制
- ❖ High comprehensive accuracy, good long-term stability, high frequency response, good anti-bias load
- ❖ Mainly used in pressing machinery, and dynamic stamping equipment instantaneous force measurement, Dynamic weight control of hopper scale and tank scale

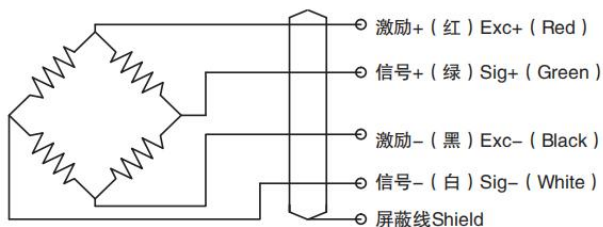
选型表 / Features & Applications

量程 Cap	ΦA	B	H	ΦI	ΦD	4-M	SR
50kg~5t	51	25	20	10	42	M5	50
6~15t	88	47	42	18	72	M6	150

技术参数 / Technical Parameters

量 程 Capacity	0.05~15t	温度补偿范围 Compensated temp range	- 10° C ~ 60 ° C
额定输出 Rated output	1.0~2.0 mV / V	工作温度范围 temp range	- 20 ° C ~ 80 ° C
滞 后 Hysteresis	0.1 % R.O.	推荐激励电压 Recommended excitation	5~10V DC
重 复 性 Repeatability	0.1% R.O.	安全载荷 Safe overload	150% R.C.
非 线 性 Non-linearity	0.3% R.O.	最大负载 Ultimate overload	200% R.C.
零点输出 Zero balance	±2% R.O.	响应频率 Response frequency	10KHZ
蠕变 Creep	0.1 % R.O.	材质 Material	合金钢
零点温漂 Temp.effect on zero	0.05 % R.O. / 10° C	电缆线规格 Cable Specifications	Ø5*2m
灵敏度温漂 Temp.effect on output	0.05 % R.O. / ° 10C	张缆极限拉力 Cable Ultimate pull	10kg
输入阻抗 Input impedance	700 Ω	防护等级 Protection class	IP60
输出阻抗 Out impedance	700 Ω	TEDS	可选
绝缘阻抗 Insulation	≥5000MΩ / 100V DC		

接线图 / Schematic Wiring Diagram



注：屏蔽线不与弹性体相连。

Note: Cable shield is not connected to element.

受力方式/ Force Direction

